

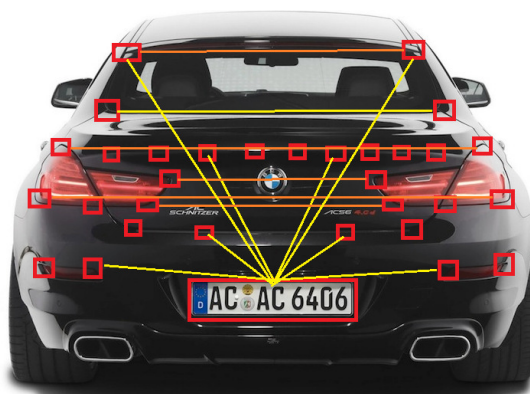


VAXALPR Advanced software for license plates recognition **SIGMA-1** with Make, Model, Color (MMC)

VaxALPR SIGMA-1 is a high-performance software that combine VAXALPR and MMC, Color) technology together. This is a technology for recognizing license plates in the most demanding circumstances, intended mainly for companies wishing to incorporate the license plate-scanning function into their range of solutions quickly and easily thus recognizing the make, model and color of the vehicle with our ready collected model database with updated new car till present day.

Key Features

- Operation in real time or delayed mode
- Currently supported more than 30 countries
 - Detection of the presence of a vehicle by real-time optical flow computation
- Multi-area of interest, rectangular or polygonal
- Image improvement module and double-contrast correction
- Detection of the direction of travel: vehicle approaching or going away
- Plug-In for calculating instantaneous speed
- Recognizing make, model, color of the vehicle



VaxALPR, a Pre-Requisites of VaxALPR SIGMA-1

MMC is an optional add-on features on VaxALPR. Without VaxALPR, MMC is not able to work as standalone. License plate of the vehicle is an essential needs to have MMC features to work. VaxALPR will send the image of the vehicle to MMC module to perform deep learning thus producing the analysis result.

Video input

VaxALPR Sigma-1 does not requires its own camera and does not required to get live video stream from camera. It works with VaxALPR to provide the picture of the vehicle.

Specification

Main features	Product	VaxALPR. Sigma-1
	Version	1.0
	Operating System	Windows and Ubuntu
	Format	Software installer / SDK library
	Minimum requirements	Intel i7 3,6 GHz / 8GB RAM / 250GB HDD / DirectShow 11
	Disk space	75MB
	Additional hardware	Nvidia Graphic Card
Image source	Image acquisition	Yes
	Image Source	VaxALPR

**Specification is subjective to change without further notice.